

5. Characteristics and Dimensions

Molded-case Circuit Breakers

NF32-SV
NF63-CV
NF63-SV
NF63-HV

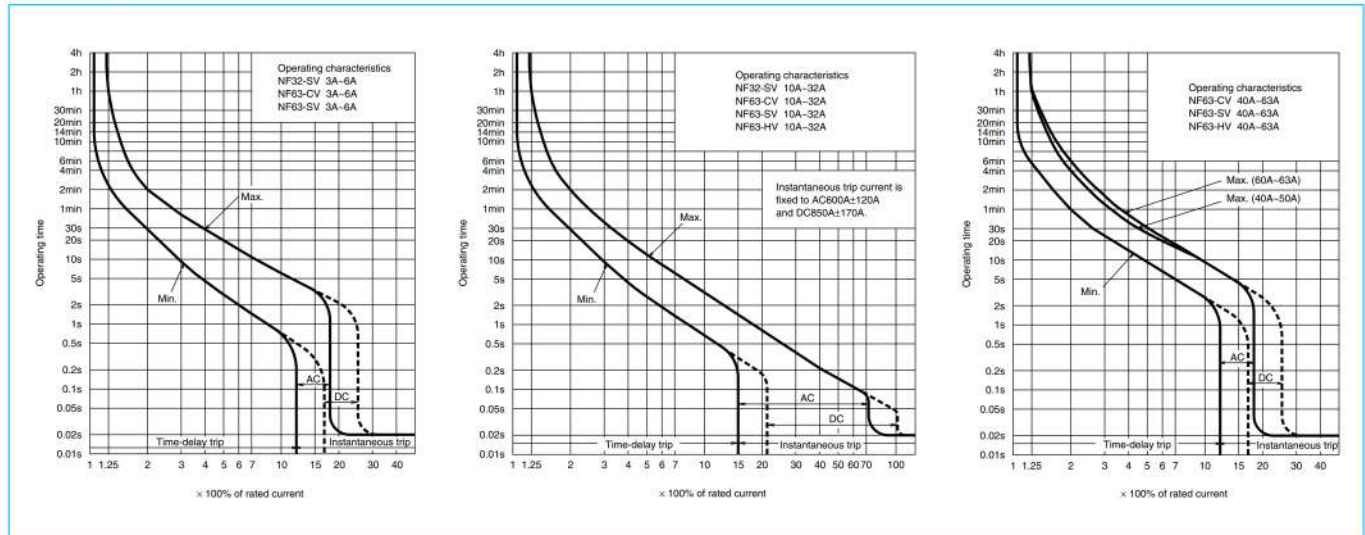


NF63-SV

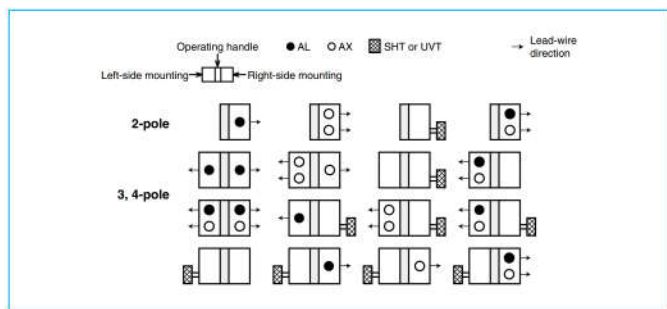
Type name		NF32-SV	NF63-CV	NF63-SV	NF63-HV
Rated current In (A)		3 4 (5) 6 10 (15) 16 20 25 (30) 32	3 4 (5) 6 10 (15) 16 20 25 (30) 32 40 50 (60) 63	3 4 (5) 6 10 (15) 16 20 25 (30) 32 40 50 (60) 63	10 (15) 16 20 25 (30) 32 40 50 (60) 63
Number of poles		2 3	2 3	2 3 4	2 3 4
Rated insulation voltage Ui (V)		600	600	600	690
Rated short-circuit breaking capacity (kA)	IEC 60947-2 AC	690V	—	—	2.5/2.5
		500V	2.5/2.5	2.5/2.5	7.5/7.5
		440V	2.5/2.5	2.5/2.5	7.5/7.5
		415V	2.5/2.5	2.5/2.5	7.5/7.5
		400V	5/5	5/5	7.5/7.5
		380V	5/5	5/5	7.5/7.5
		230V	7.5/7.5	7.5/7.5	15/15
Standard attached parts (front connection)	DC	250V (*1)	2.5/2.5	7.5/7.5	25/19 7.5/7.5
		Mounting screw: M4×0.7×55 (2 and 3P: 2pcs, 4P: 4pcs) Insulation barrier: (2P: 1pc, 3P: 2pcs, 4P: 3pcs) (*2)			

Notes: *1 Use two poles for three- and four-pole products. Not available for use with connection as shown at the bottom of page 13.
*2 Supplied with NF63-SV and NF63-HV.

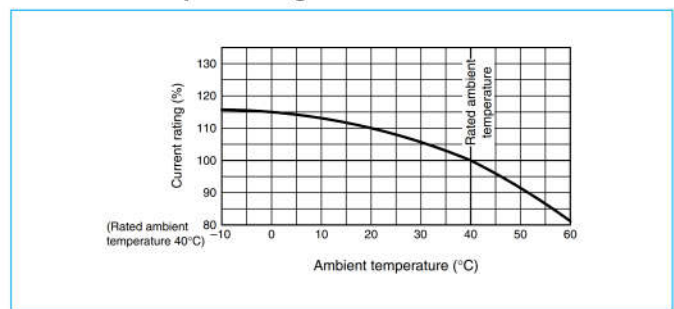
Operating Characteristics



Internal Accessories



Ambient Compensating Curve

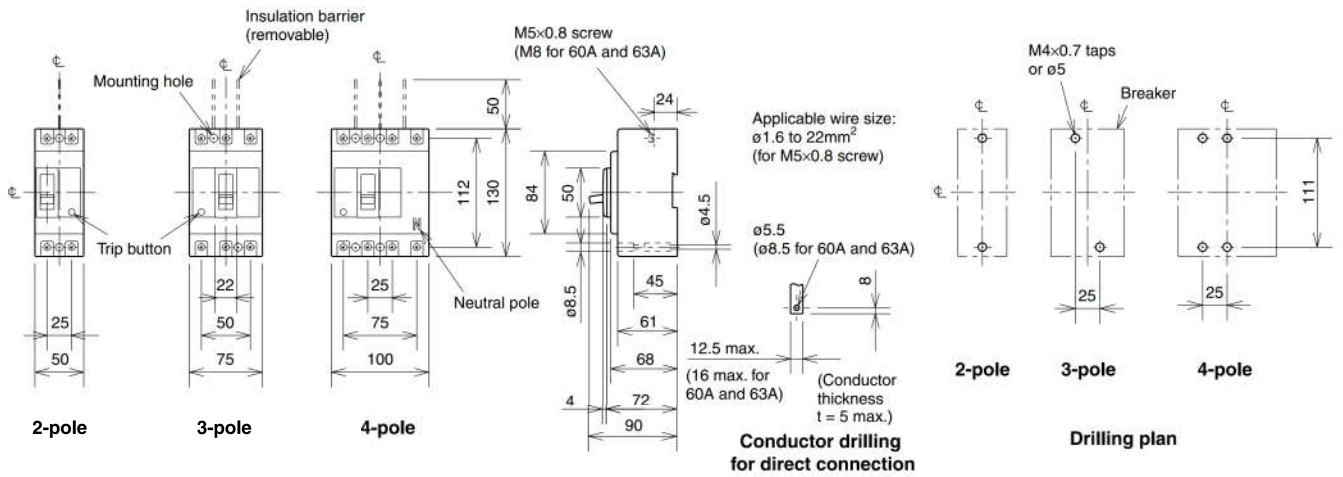


External Accessories

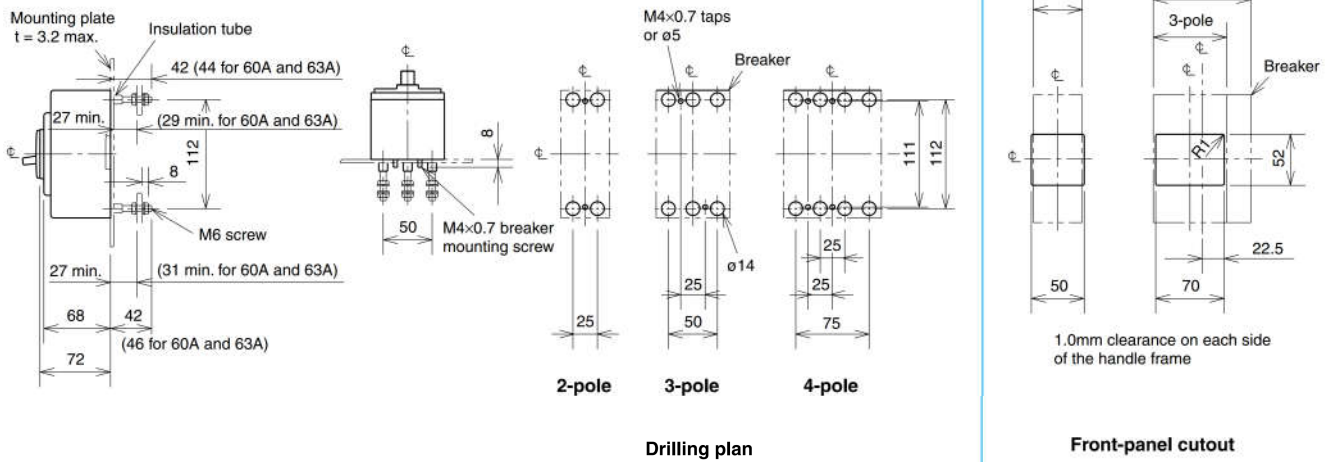
Accessories		Type name	Reference page	Accessories		Type name	Reference page		
Operating handle	F	2P F-05SV2	37	Mechanical interlock	MI	2, 3P MI-05SV3	40		
		3, 4P F-05SV			4P MI-05SV4				
	V	2P V-05SV2	38		Terminal cover	Small	TC-S	2P TCS-05SV2	39
		3, 4P V-05SV					3P TCS-05SV3		
S	S-05SV	39	Large	TC-L		2P TCL-05SV2	TCL-05SV2L		
LC	LC-05SV					3P TCL-05SV3			
Handle lock device	(*) HL	HLF-05SV	41	Skeleton	TTC	2P TTC-05SV2	39		
		HLN-05SV				3P TTC-05SV3			
		HL-S		HLS-05SV	Rear	BTC	2P BTC-05SV2	39	
					3P BTC-05SV3				
				Plug-in	PTC	2P PTC-05SV2	39		
						3P PTC-05SV3			
				IEC 35mm rail mounting adapters		DIN-05SV	41		

Note: *1 HLF types are used for OFF-lock and HLN types for ON-lock.

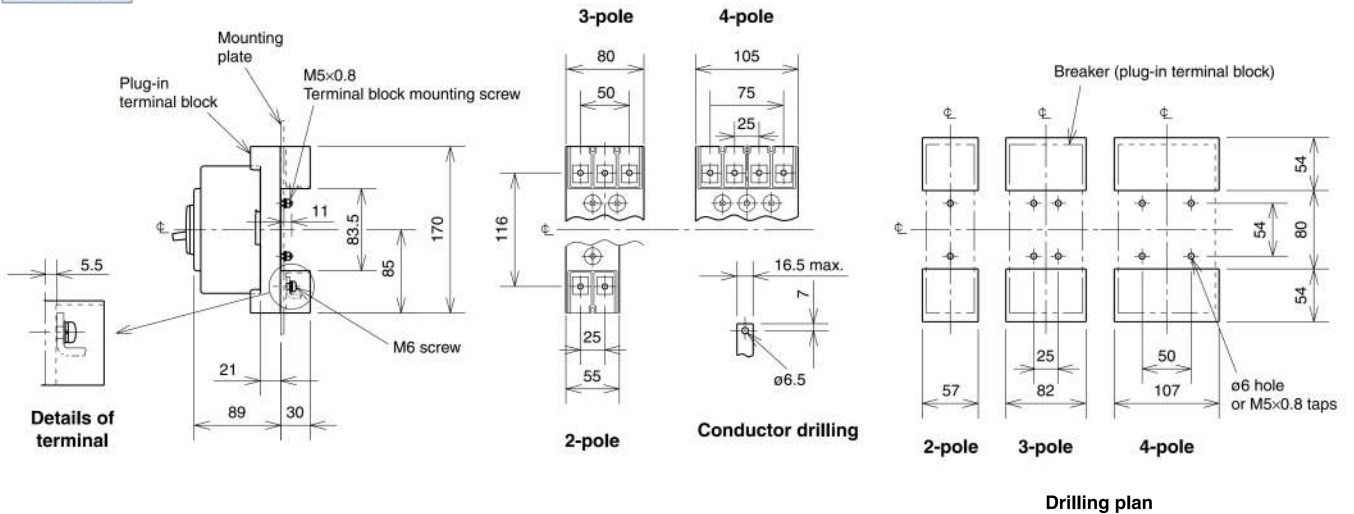
Front connection



Rear connection



Plug-in



Remark: 1. Only two- and three-pole models are available for NF32-SV and NF63-CV.